

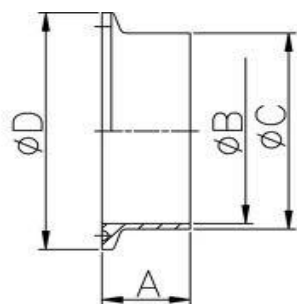
**Tri-Clamp Ferrule DIN 32676 (KK) / ISO 2852 / BS 4825**

**316L**

	<b>C</b>	<b>D</b>	<b>A</b>	
DN 10	013.00 mm	FL=034.0 mm	L=18.0	€ 3,55
0.50"	012.70 mm	FL=025.0 mm	L=28.6	€ 5,00
DN 15	019.00 mm	FL=034.0 mm	L=18.0	€ 3,55
0.75"	019.05 mm	FL=025.0 mm	L=28.6	€ 5,00
DN 20	023.00 mm	FL=034.0 mm	L=18.0	€ 3,55
1.00"	025.40 mm	FL=050.5 mm	L=21.5	€ 4,00
DN 25	029.00 mm	FL=050.5 mm	L=21.5	€ 4,00
DN 32	035.00 mm	FL=050.5 mm	L=21.5	€ 4,40
1.50"	038.10 mm	FL=050.5 mm	L=21.5	€ 4,40
DN 40	041.00 mm	FL=050.5 mm	L=21.5	€ 4,40
2.00"	050.80 mm	FL=064.0 mm	L=21.5	€ 5,00
DN 50	053.00 mm	FL=064.0 mm	L=21.5	€ 5,00
2.50"	063.50 mm	FL=077.5 mm	L=21.5	€ 7,10
DN 65	070.00 mm	FL=091.0 mm	L=28.0	€ 7,80
3.00"	076.10 mm	FL=091.0 mm	L=21.5	€ 8,40
DN 80	085.00 mm	FL=106.0 mm	L=28.0	€ 11,35
4.00"	101.00 mm	FL=119.0 mm	L=21.5	€ 11,80
DN 100	104.00 mm	FL=119.0 mm	L=28.0	€ 14,10
DN 125	129.00 mm	FL=155.0 mm	L=28.0	€ 38,00
5.00"	129.00 mm	FL=144.4 mm	L=28.0	€ 38,00
DN 150	154.00 mm	FL=183.0 mm	L=28.0	€ 45,00
6.00"	154.00 mm	FL=167.0 mm	L=28.0	€ 45,00
DN 200	204.00 mm	FL=233.5 mm	L=28.0	€ 82,00
8.00"	204.00 mm	FL=217.0 mm	L=28.0	€ 82,00
DN 250	254.00 mm	FL=287.5 mm	L=28.0	€ 149,50
10.0"	254.00 mm	FL=268.0 mm	L=28.0	€ 149,50
DN 300	304.00 mm	FL=319.0 mm	L=28.0	€ 174,50


**Tri-Clamp Blindplaat DIN 32676 / ISO 2852 / ISO 1127**
**316L**

		<b>A</b>	<b>B</b>	
DN 10	Flens	034.0 mm	05.6 mm	€ 4,30
0.50"	Flens	025.0 mm	06.0 mm	€ 4,30
DN 15	Flens	034.0 mm	07.0 mm	€ 4,30
0.75"	Flens	025.0 mm	07.0 mm	€ 4,30
DN 20	Flens	034.0 mm	07.0 mm	€ 4,30
1.00"	Flens	050.5 mm	07.0 mm	€ 5,00
DN 25	Flens	050.5 mm	07.0 mm	€ 5,00
DN 32	Flens	050.5 mm	07.0 mm	€ 5,00
1.50"	Flens	050.5 mm	07.0 mm	€ 5,00
DN 40	Flens	050.5 mm	07.0 mm	€ 5,00
2.00"	Flens	064.0 mm	07.0 mm	€ 5,75
DN 50	Flens	064.0 mm	07.0 mm	€ 5,75
2.50"	Flens	077.5 mm	07.0 mm	€ 7,15
DN 65	Flens	091.0 mm	07.0 mm	€ 10,00
3.00"	Flens	091.0 mm	07.0 mm	€ 10,00
DN 80	Flens	106.0 mm	07.0 mm	€ 10,75
4.00"	Flens	119.0 mm	09.0 mm	€ 13,60
DN 100	Flens	119.0 mm	09.0 mm	€ 13,60
DN 100 ISO	Flens	130.0 mm	10.0 mm	€ 17,90
5.00"	Flens	144.4 mm	10.0 mm	€ 42,20
DN 125	Flens	155.0 mm	10.0 mm	€ 42,20
6.00"	Flens	167.0 mm	10.0 mm	€ 49,30
DN 150	Flens	186.0 mm	10.0 mm	€ 49,30
8.00"	Flens	217.4 mm	10.0 mm	€ 108,00
DN 200	Flens	233.5 mm	10.0 mm	€ 108,00
10"	Flens	268.0 mm	10.0 mm	€ 108,00
DN 250	Flens	287.5 mm	10.0 mm	€ 141,00
DN 300	Flens	319.0 mm	10.0 mm	€ 196,00



### Tri-Clamp Ferrule DIN 32676 (KL) / ISO 2852 / BS 4825

316L

	C	D	A	
DN 10	013.00 mm	FL=034.0 mm	L=28.6	€ 7,80
DN 15	019.00 mm	FL=034.0 mm	L=28.6	€ 8,00
DN 20	023.00 mm	FL=034.0 mm	L=28.6	€ 8,40
1.00"	025.40 mm	FL=050.5 mm	L=28.6	€ 7,50
DN 25	029.00 mm	FL=050.5 mm	L=36.0	€ 11,50
DN 32	035.00 mm	FL=050.5 mm	L=36.0	€ 12,50
1.50"	038.10 mm	FL=050.5 mm	L=28.6	€ 8,00
DN 40	041.00 mm	FL=050.5 mm	L=36.0	€ 13,00
2.00"	050.80 mm	FL=064.0 mm	L=28.6	€ 9,00
DN 50	053.00 mm	FL=064.0 mm	L=36.0	€ 13,50
2.50"	063.50 mm	FL=077.5 mm	L=28.6	€ 10,00
DN 65	070.00 mm	FL=091.0 mm	L=48.0	€ 30,00
3.00"	076.10 mm	FL=091.0 mm	L=28.6	€ 11,00
DN 80	085.00 mm	FL=106.0 mm	L=48.0	€ 62,00
4.00"	101.00 mm	FL=119.0 mm	L=28.6	€ 15,00
DN 100	104.00 mm	FL=119.0 mm	L=48.0	€ 67,00
DN 125	129.00 mm	FL=155.0 mm	L=66.0	€ 91,00
DN 150	154.00 mm	FL=183.0 mm	L=66.0	€ 122,00
DN 200	204.00 mm	FL=233.5 mm	L=66.0	€ 152,00

### Tri-Clamp Ferrule ISO 1127

316L

	B	A	D	
DN 15 ISO	021.30 mm	050.5 mm	L=21.5	€ 7,15
DN 20 ISO	026.90 mm	050.5 mm	L=21.5	€ 7,15
DN 25 ISO	033.70 mm	050.5 mm	L=21.5	€ 7,15
DN 32 ISO	042.40 mm	050.5 mm	L=21.5	€ 8,30
DN 40 ISO	048.30 mm	064.0 mm	L=21.5	€ 8,60
DN 50 ISO	060.30 mm	077.5 mm	L=28.0	€ 9,45
DN 65 ISO	076.10 mm	091.0 mm	L=28.0	€ 9,75
DN 80 ISO	088.90 mm	106.0 mm	L=28.0	€ 20,75
DN 100 ISO	114.30 mm	130.0 mm	L=28.0	€ 24,65
DN 125 ISO	139.70 mm	155.0 mm	L=28.0	€ 56,10

**Tri-Clamp Beugel DIN 32676 / ISO 2852 / ISO 1127**
**304**
**MET TUV CERTIFICAAT**

DN 10	Flens	034.0 mm	€ 5,00
0.50"	Flens	025.0 mm	€ 5,00
DN 15	Flens	034.0 mm	€ 5,00
0.75"	Flens	025.0 mm	€ 5,00
DN 20	Flens	034.0 mm	€ 5,00
1.00"	Flens	050.5 mm	€ 5,70
DN 25	Flens	050.5 mm	€ 5,70
DN 32	Flens	050.5 mm	€ 5,70
1.50"	Flens	050.5 mm	€ 5,70
DN 40	Flens	050.5 mm	€ 5,70
2.00"	Flens	064.0 mm	€ 7,20
DN 50	Flens	064.0 mm	€ 7,20
2.50"	Flens	077.5 mm	€ 9,25
DN 65	Flens	091.0 mm	€ 10,65
3.00"	Flens	091.0 mm	€ 10,65
DN 80	Flens	106.0 mm	€ 11,40
4.00"	Flens	119.0 mm	€ 12,10
DN 100	Flens	119.0 mm	€ 12,10
DN 100 ISO	Flens	130.0 mm	€ 22,00
5.00"	Flens	144.4 mm	€ 42,50
DN 125	Flens	155.0 mm	€ 42,50
6.00"	Flens	167.0 mm	€ 44,80
DN 150	Flens	183.0 mm	€ 44,80
8.00"	Flens	217.4 mm	€ 89,50
DN 200	Flens	233.5 mm	€ 95,40
10.0"	Flens	268.0 mm	€ 111,00
DN 250	Flens	286.1 mm	€ 111,00
DN 300	Flens	319.0 mm	€ 128,00

**Tri-Clamp dichtring DIN 32676 / ISO 2852 / ISO 1127**
**EPDM**

DN 10	Flens	034.0 mm	€ 2,10
0.50"	Flens	025.0 mm	€ 2,10
DN 15	Flens	034.0 mm	€ 2,10
0.75"	Flens	025.0 mm	€ 2,10
DN 20	Flens	034.0 mm	€ 2,10
1.00"	Flens	050.5 mm	€ 2,10
DN 25	Flens	050.5 mm	€ 2,10
DN 32	Flens	050.5 mm	€ 2,10
1.50"	Flens	050.5 mm	€ 2,10
DN 40	Flens	050.5 mm	€ 2,10
2.00"	Flens	064.0 mm	€ 2,50
DN 50	Flens	064.0 mm	€ 2,50
2.50"	Flens	077.5 mm	€ 2,70
DN 65	Flens	091.0 mm	€ 2,80
3.00"	Flens	091.0 mm	€ 2,80
DN 80	Flens	106.0 mm	€ 3,00
4.00"	Flens	119.0 mm	€ 3,50
DN 100	Flens	119.0 mm	€ 3,50
DN 100 ISO	Flens	130.0 mm	€ 18,00
5.00"	Flens	144.4 mm	€ 18,00
DN 125	Flens	155.0 mm	€ 19,00
6.00"	Flens	167.0 mm	€ 19,00
DN 150	Flens	183.0 mm	€ 28,00
8.00"	Flens	217.4 mm	€ 30,00
DN 200	Flens	233.5 mm	€ 30,00
10.0"	Flens	268.0 mm	€ 32,00
DN 250	Flens	286.1 mm	€ 32,00
DN 300	Flens	319.0 mm	€ 34,00

